

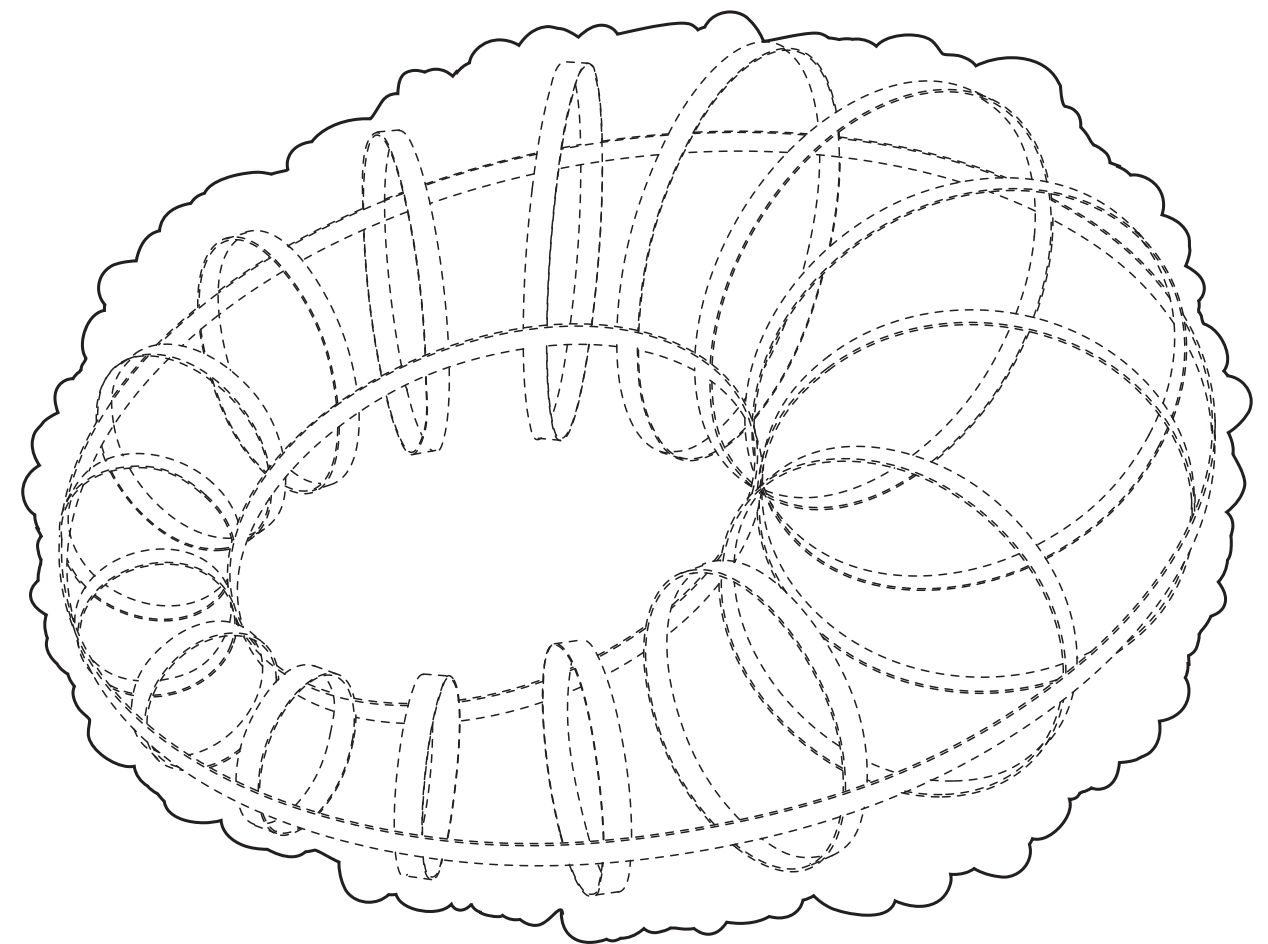
A ARCHITECTURE FOR DOGS

Architecture for the Bichon Frise

designer **KAZUYO SEJIMA**
architecture for **BICHON FRISE**

knit designer **KEIICHI MURAMATSU**

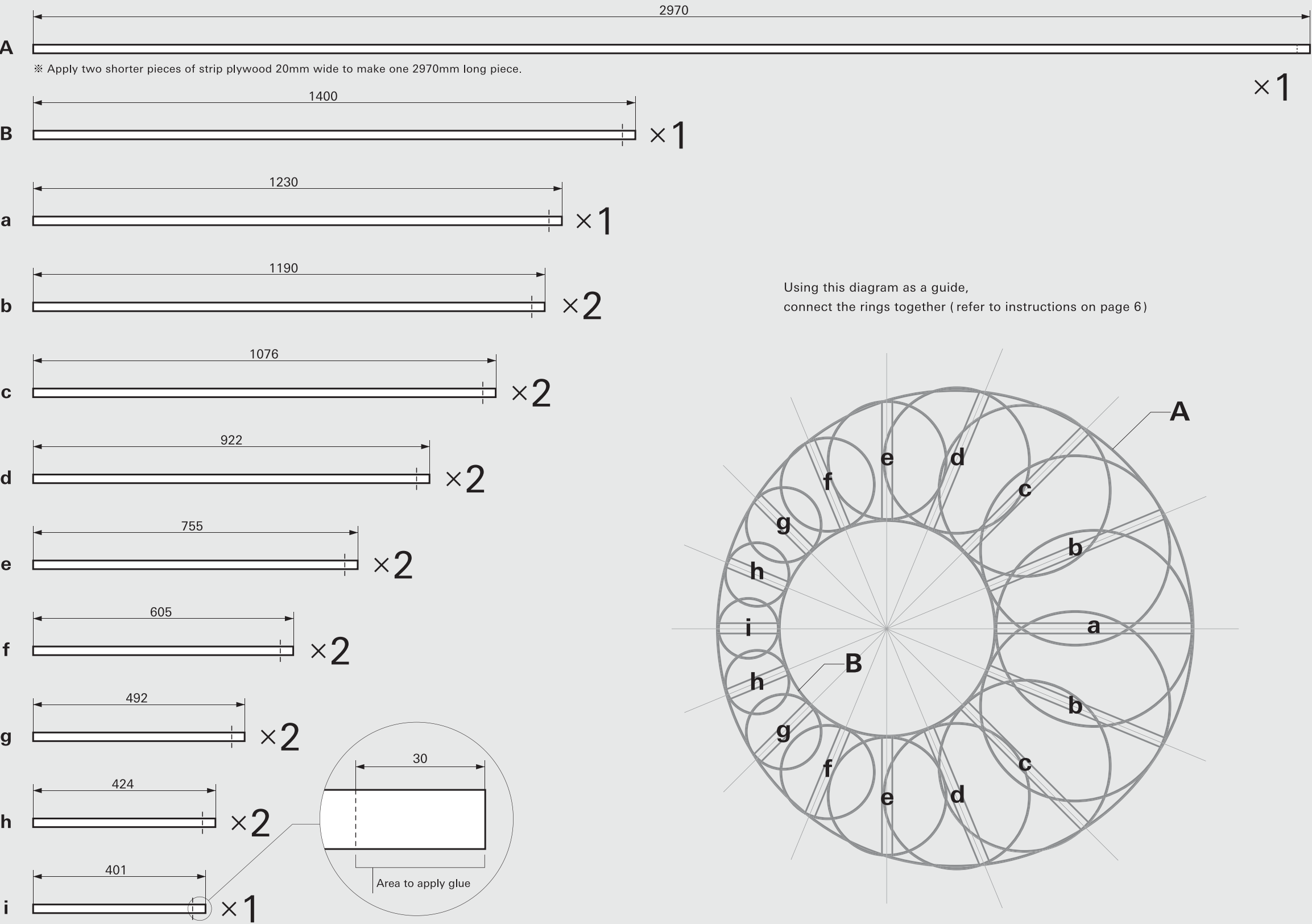
update 2012/11/15



Component Pieces :

scale = 1 : 10

Frame plywood (MDF) / w22mm



Materials :

- Plywood (MDF) / t = 3mm
- Twine
- White Paint
- Glue

Tools :

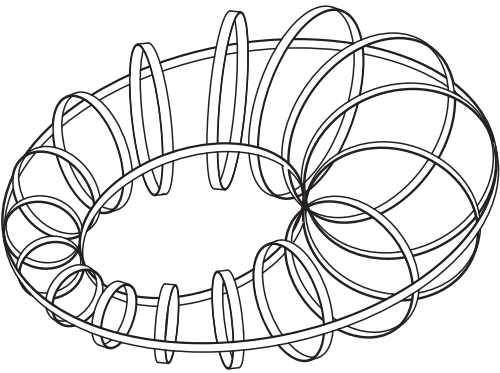
- Box-cutter
- Scissors
- Paintbrush

Size :

w950 × d950 × h400 mm

Weight :

Approx. 5 kg (frame+coat)



This is a construction project and is not advisable for children under the age of 13, unless under the supervision of adults. Please use caution when using cutting tools, and wear eye and hand protection at all times. All measurements are in metric units and our list of wood materials, only suggestions.

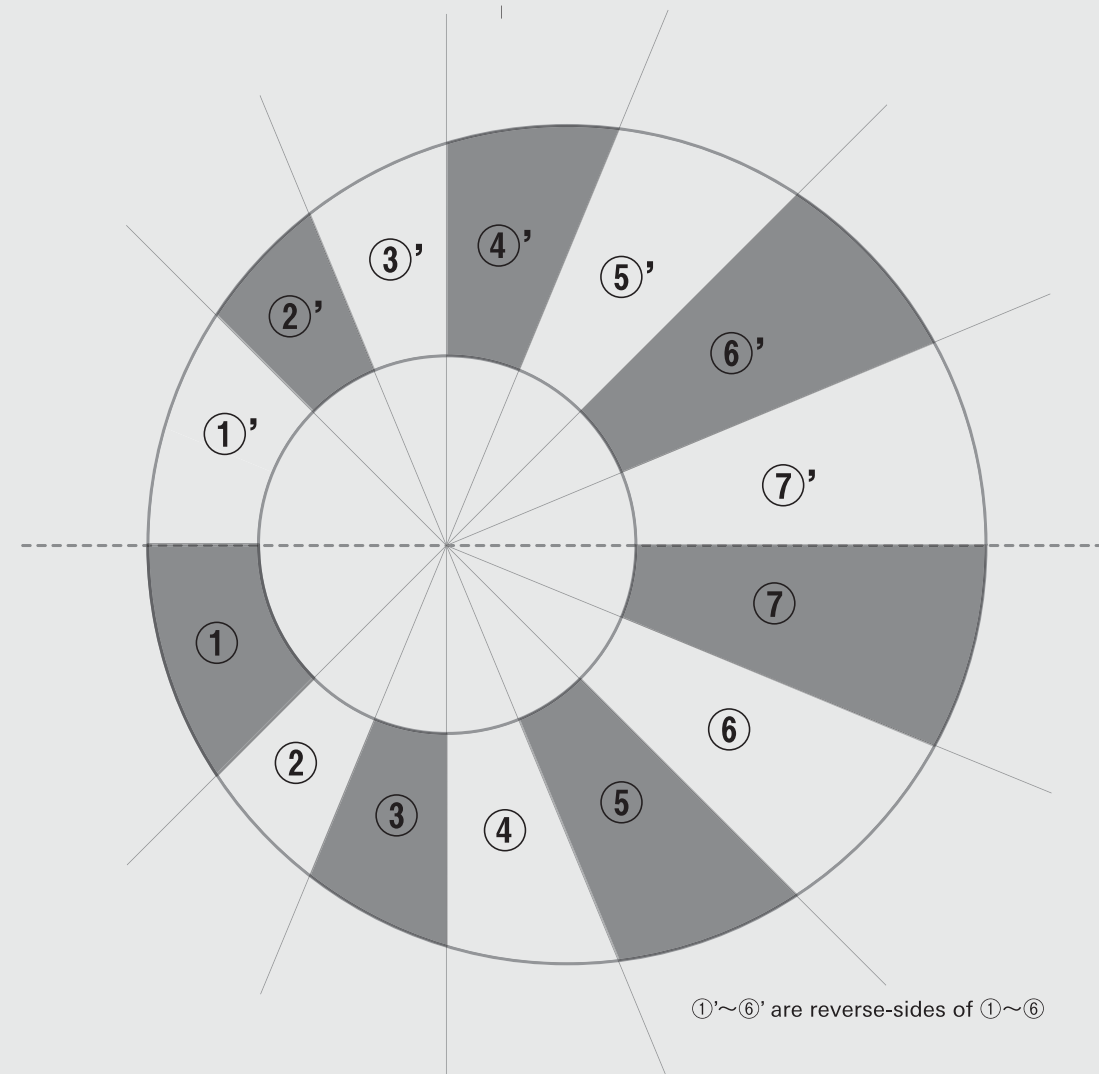
Architecture for Dogs is not responsible for any injuries incurred from the building process or derived from the structure itself, nor does it take responsibility for faulty materials or unsatisfactory results.

(c) Architecture for Dogs, 2012. All Rights reserved.
The download of this blueprint in no way transfers any copyright or other ownership interest in them to the buyer except for a limited license to use it to construct one piece at a time.

```
scale = 1:10
```

Diagram of a trapezoidal roof section with dimensions 596 (width) and 159 (height). The diagram shows a trapezoid with a dashed rectangle inside, labeled with a circled '2'. A multiplier 'x2' is shown to the right.

Technical drawing of a symmetrical arrowhead-shaped part. The top width is 1037, the height is 210, and the part is labeled with a circled 5. A multiplier $\times 2$ is shown to the right.



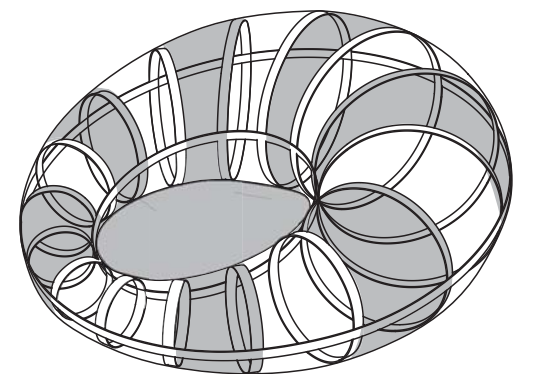
Balls of Yarn / 15M at 40g approx. 100 balls

Scissors

Large Crochet Needles (7mm)

w950 × d950 × h400 mm

Approx. 5 kg (frame+coat)



This is a construction project and is not advisable for children under the age of 13, unless under the supervision of adults. Please use caution when using cutting tools, and wear eye and hand protection at all times. All measurements are in metric units and our list of wood materials, only suggestions.

Architecture for Dogs is not responsible for any injuries incurred from the building process or derived from the structure itself, nor does it take responsibility for faulty materials or unsatisfactory results.

(c) Architecture for Dogs, 2012. All Rights reserved.
The download of this blueprint in no way transfers any copyright or other ownership interest in them to the buyer except for a limited license to use it to construct one piece at a time.

Knitting Instructions :

Knitting Legend

Cut Yarn

Insert Yarn

Chain Stitch

Slip Stitch

Crochet

Loop Stitch

Half Double Crochet

Single Crochet Double Stitch
(stitch twice into the same ring)

Chain Stitch

1

2

3

[front]

[back]

Slip Stitch

1

2

3

4

Tight Stitch

1

2

3

4

Loop Stitch

1

2

3

4

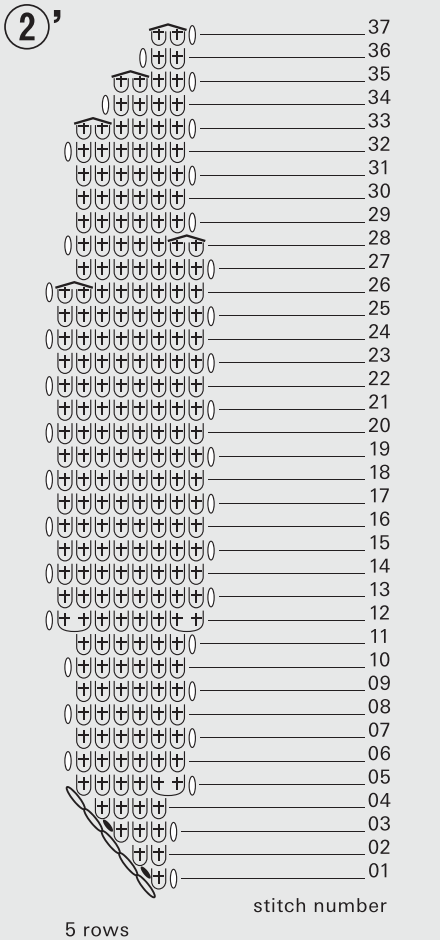
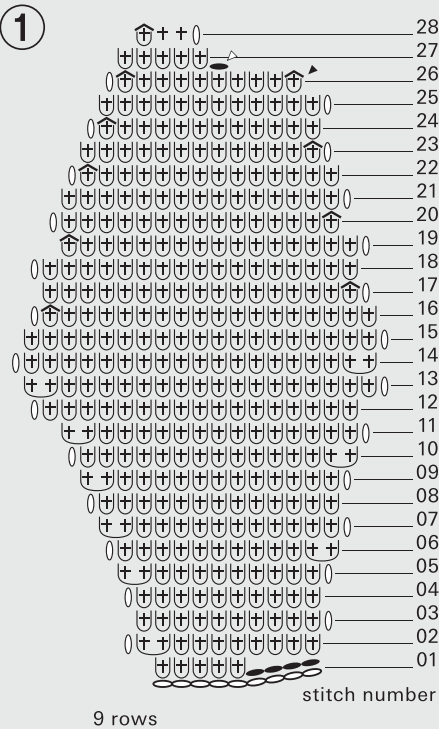
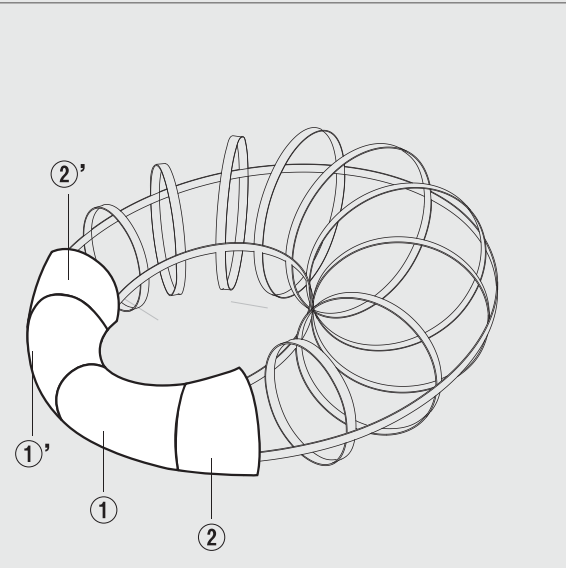
Half Double Crochet (Same steps 1 and 2 as the Loop Stitch)

3

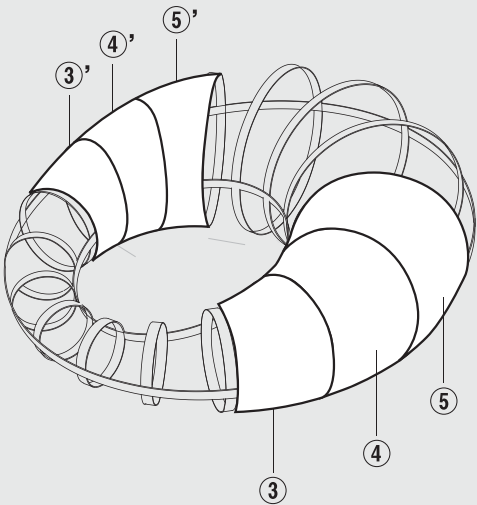
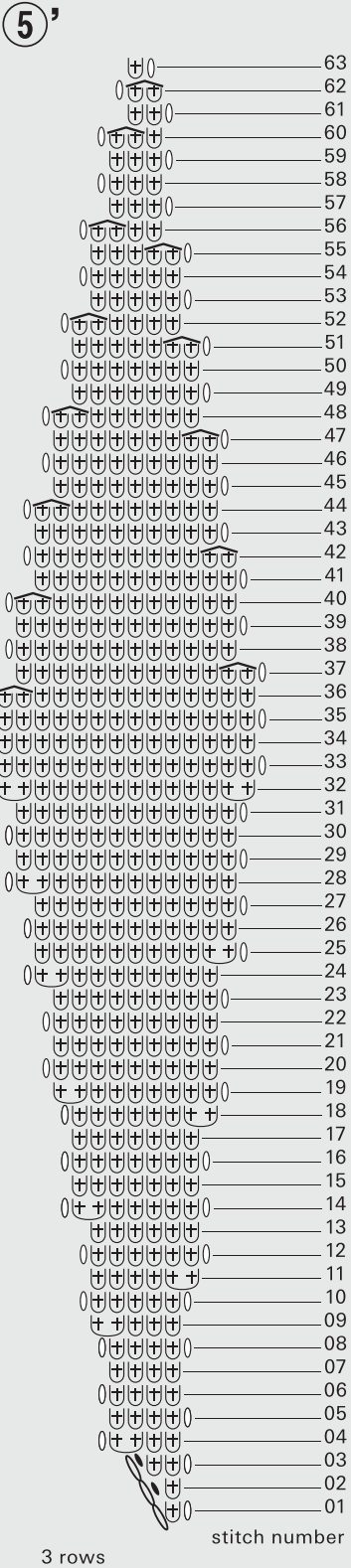
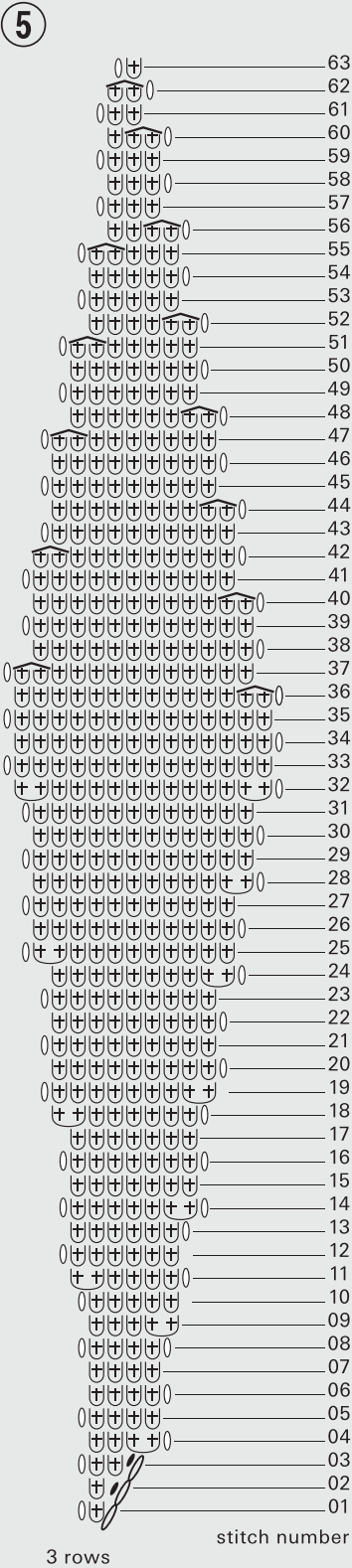
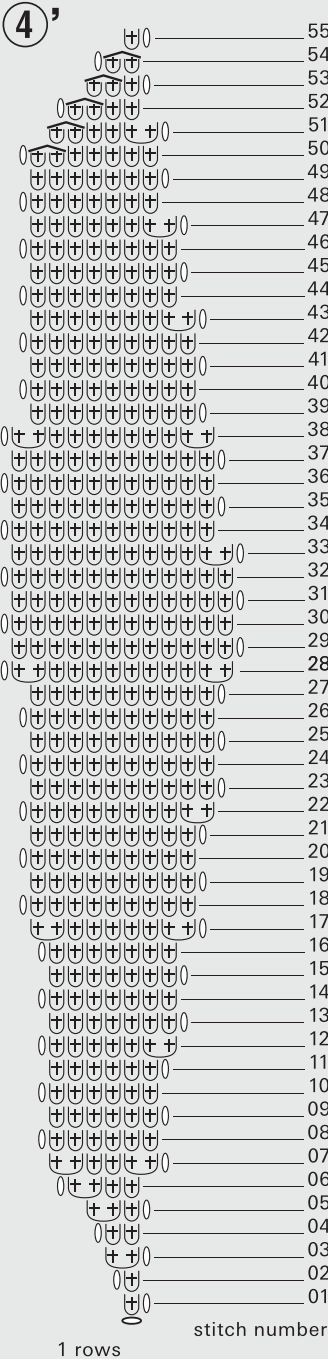
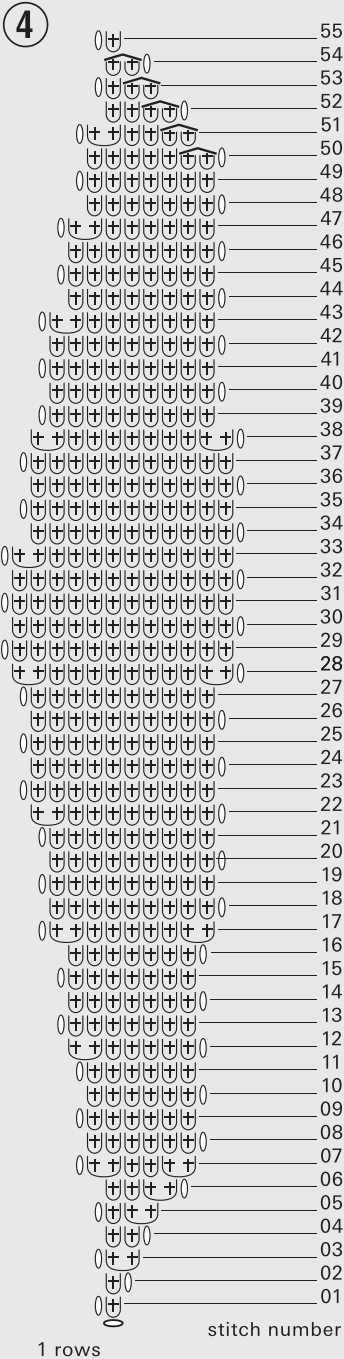
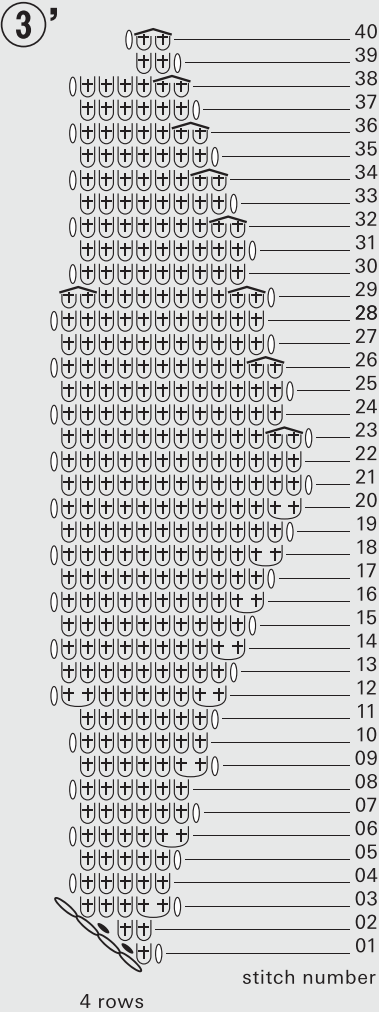
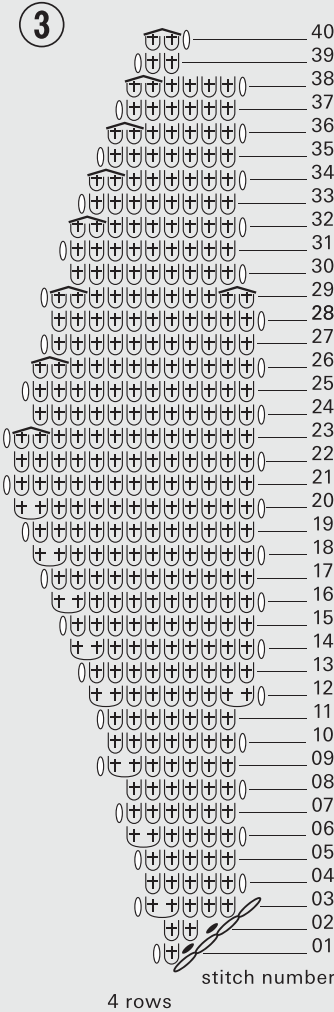
4

5

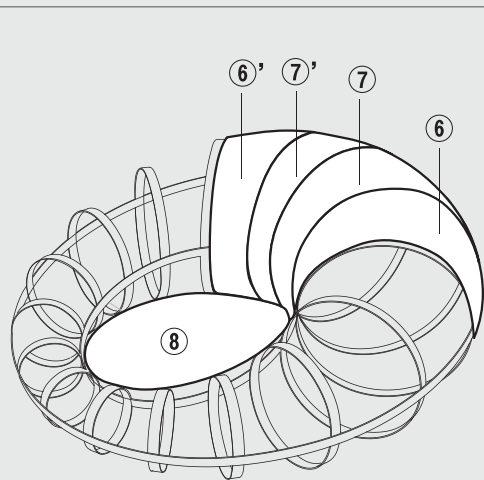
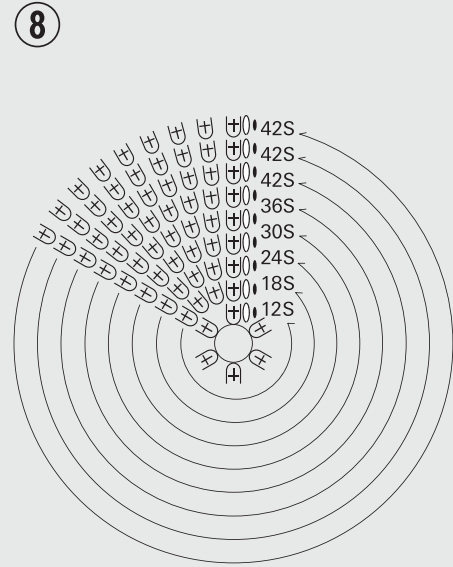
6



Knitting Instructions :



Knitting Instructions:

[illegible][illegible]

	0	stitch number	72
	0	stitch number	71
	0	stitch number	70
	0	stitch number	69
	0	stitch number	68
	0	stitch number	67
	0	stitch number	66
	0	stitch number	65
	0	stitch number	64
	0	stitch number	63
	0	stitch number	62
	0	stitch number	61
	0	stitch number	60
	0	stitch number	59
	0	stitch number	58
	0	stitch number	57
	0	stitch number	56
	0	stitch number	55
	0	stitch number	54
	0	stitch number	53
	0	stitch number	52
	0	stitch number	51
	0	stitch number	50
	0	stitch number	49
	0	stitch number	48
	0	stitch number	47
	0	stitch number	46
	0	stitch number	45
	0	stitch number	44
	0	stitch number	43
	0	stitch number	42
	0	stitch number	41
	0	stitch number	40
	0	stitch number	39
	0	stitch number	38
	0	stitch number	37
	0	stitch number	36
	0	stitch number	35
	0	stitch number	34
	0	stitch number	33
	0	stitch number	32
	0	stitch number	31
	0	stitch number	30
	0	stitch number	29
	0	stitch number	28
	0	stitch number	27
	0	stitch number	26
	0	stitch number	25
	0	stitch number	24
	0	stitch number	23
	0	stitch number	22
	0	stitch number	21
	0	stitch number	20
	0	stitch number	19
	0	stitch number	18
	0	stitch number	17
	0	stitch number	16
	0	stitch number	15
	0	stitch number	14
	0	stitch number	13
	0	stitch number	12
	0	stitch number	11
	0	stitch number	10
	0	stitch number	09
	0	stitch number	08
	0	stitch number	07
	0	stitch number	06
	0	stitch number	05
	0	stitch number	04
	0	stitch number	03
	0	stitch number	02
	0	stitch number	01
6 rows			

	0	72
	0	71
	0	70
	0	69
	0	68
	0	67
	0	66
	0	65
	0	64
	0	63
	0	62
	0	61
	0	60
	0	59
	0	58
	0	57
	0	56
	0	55
	0	54
	0	53
	0	52
	0	51
	0	50
	0	49
	0	48
	0	47
	0	46
	0	45
	0	44
	0	43
	0	42
	0	41
	0	40
	0	39
	0	38
	0	37
	0	36
	0	35
	0	34
	0	33
	0	32
	0	31
	0	30
	0	29
	0	28
	0	27
	0	26
	0	25
	0	24
	0	23
	0	22
	0	21
	0	20
	0	19
	0	18
	0	17
	0	16
	0	15
	0	14
	0	13
	0	12
	0	11
	0	10
	0	09
	0	08
	0	07
	0	06
	0	05
	0	04
	0	03
	0	02
	0	01

6 rows

stitch number

Assembly Instructions :

